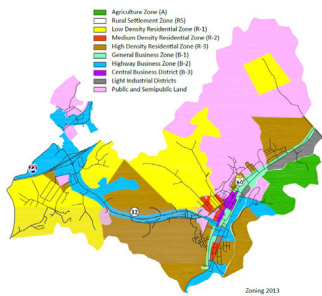
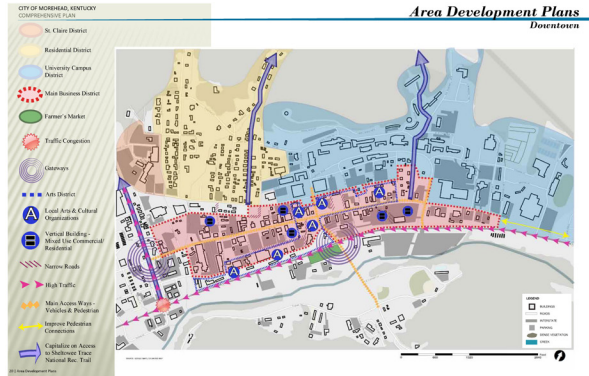
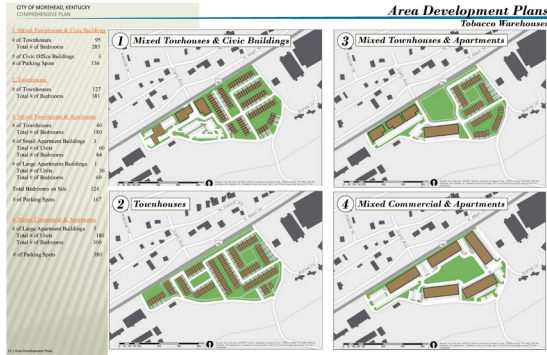


City of Morehead, Kentucky

COMPREHENSIVE PLAN AND ZONING CODE



ZONING CODE ADOPTED | 2019 COMPREHENSIVE PLAN ADOPTED | 2014

Morehead, KY is a small college town located in the hilly terrain of eastern Kentucky. In 2013, the city contracted with McBride Dale Clarion to prepare the city's comprehensive plan. The comprehensive plan for the City of Morehead is designed to guide current and future actions of the city and contains a series of recommendations organized in three chapters: goals and objectives; a strategic action plan for the whole city; and a series of area development/redevelopment concepts for targeted for reinvestment, redevelopment, or growth. The dynamics between the growing

university campus and the success of downtown Morehead in an extremely restricted footprint are at the heart of the area plan recommendations. The plan was adopted by the city in April 2014.

In 2017, the city once again retained MDC to update the city's zoning code. The code update includes an overall refreshment and reformatting of the regulations. The code includes new parking and district regulations to help manage the relationship between the city and the university student population.

Morehead is dealing with regulating the use of residential structures for student housing. This is being addressed through improved use standards and, clarifying definitions and designation of districts where groups or dormitory housing will be permitted.

CONTACT INFORMATION

Rodney Fouch
 Planner/Inspector
 Morehead, KY
 P. 606.784.8505
 E. rfouch@cityofmorehead.net