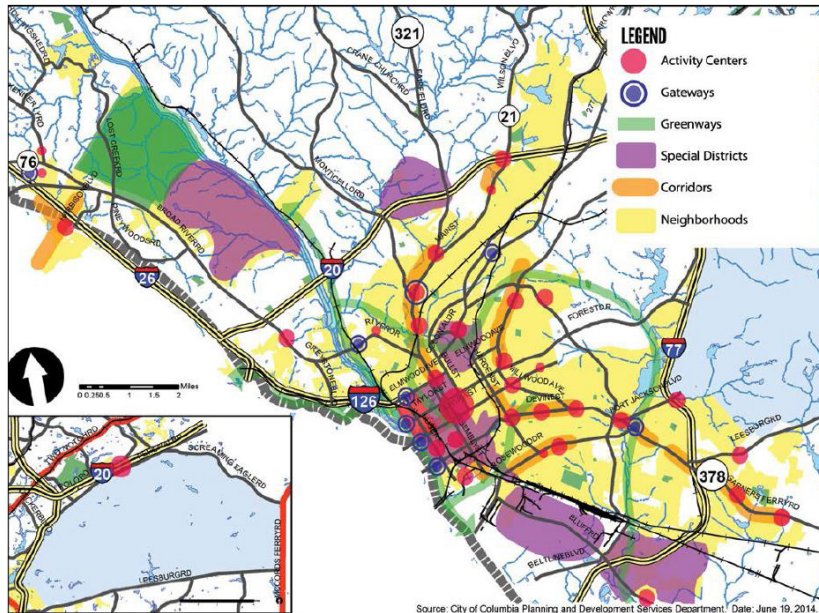


City of Columbia, South Carolina

PLAN COLUMBIA: COMPREHENSIVE LAND USE PLAN



ADOPTED | 2015

The City of Columbia is a historic planned city, experiencing an urban renaissance. In 2014, the team led by McBride Dale Clarion and including Planning Next prepared an innovative update to the land use chapter of the city's comprehensive plan. The plan focuses on urban form, scale, and character to foster successful population and business growth in the incorporated city, while maintaining the historic and established neighborhoods and architecture that contribute to the southern city's character and identity. This update was undertaken in coordination with

Richland County which was also updating their land use plan. The land use plan update set the foundation for a comprehensive update to the city's development ordinances. Clarion Associates is currently preparing the revised development code to implement the vision of the plan.

MDC and PlanningNEXT coordinated to create a digital interactive plan document that is easy to navigate and follow, which can also be printed and used as a traditional document. View the interactive plan here: www.weplantogether.org

PROJECT PARTNERS

- planningNEXT
- Toole Design Group

CONTACT INFORMATION

Krista Hampton
 Director - Planning Department
 Columbia, South Carolina
 P: 803.545.3425
 E: kmhampton@columbiasc.net